

**CLINICAL RESULTS  
2002**





## THE RESULTS OF ASSISTED REPRODUCTIVE TREATMENTS CARRIED OUT AT IVI DURING 2002

In Vitro Fertilisation (IVF-ICSI)	3.496 cycles
Ovum donation (OVODON)	1.861 cycles
Frozen Embryo Transfer	719 cycles
Preimplantation Genetic Diagnosis (PGD)	785 cycles
<hr/>	
<b>TOTAL</b>	<b>6.861 cycles</b>





## 2002 RESULTS FOR IVF-ICSI

	Transfer on day 2-3	Transfer on day 5-6
Cycles carried out (transfers)	2,622 (2,253)	874 (716)
No. of pregnancies	1,311	428
% pregnancy following transfer	50,1	48,7
% implantation following embryo transfer	26,2	25,3
% multiple pregnancy	37,2*	63**

\* 78% twin

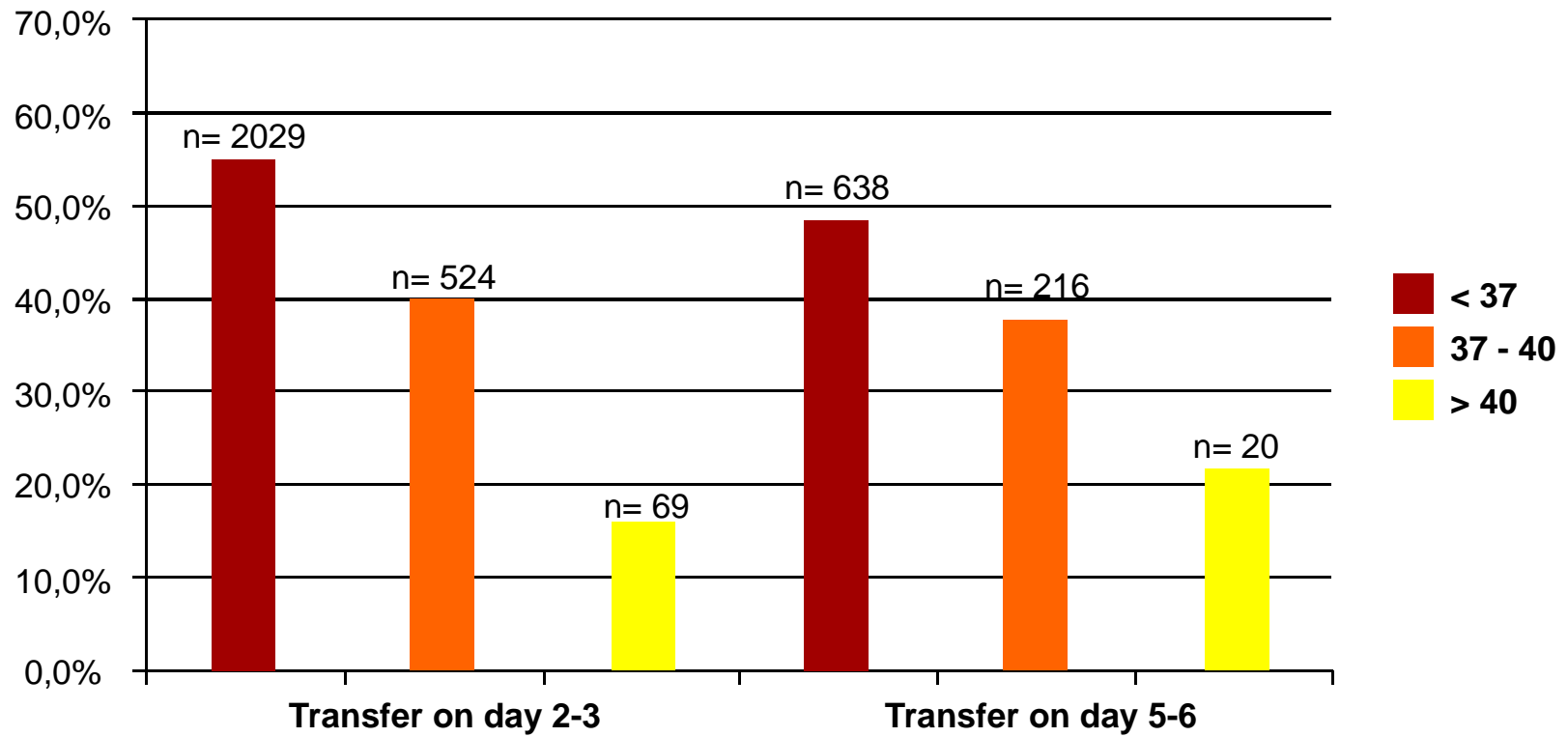
\*\* 82% twin



DATA AUDITED BY AN INDEPENDENT THIRD PARTY



# PREGNANCY AND IMPLANTATION RATES WITH IVF AND ICSI BY AGE GROUPS AND TRANSFER DAY



DATA AUDITED BY AN INDEPENDENT THIRD PARTY



## 2002 RESULTS FOR OVUM DONATION

	Transfer on day 2-3	Transfer on day 5-6
Cycles carried out (transfers)	1,284	577
No. of pregnancies	706	379
% pregnancy following transfer	54,9	65,7
% implantation following embryo transfer	28,6	43,1
% multiple pregnancy	30,2*	46,1**

\* 87% twin

\*\* 82% twin



DATA AUDITED BY AN INDEPENDENT THIRD PARTY



## 2002 RESULTS FOR FROZEN EMBRYO TRANSFER

	<b>Total</b>
Embryos thawed (frozen embryo transfers)	921 (719)
Rate of embryo transfer %	64,8
No. of pregnancies	314
% pregnancy following transfer	43,8
% embryo implantation	23,1



DATA AUDITED BY AN INDEPENDENT THIRD PARTY



## 2002 RESULTS FOR PGD (Preimplantation Genetic Diagnosis). Aneuploidy study\*

	Previous implantation failures (3 or more)	Repeated miscarriage (3 or more)	Advanced maternal age (≥ 38 years old)	Male factor (abnormal FISH)	Mixed causes
No. of cycles	103	170	180	16	197
% abnormal embryos	65,9	69,7	67,1	59,7	48,8
No. of pregnancies	16	44	30	5	61
% pregnancies	26,6	36,7	31,2	31,2	40,1
% implantation	19,5	25,5	21,8	25,0	30,7

\* E.g. Down's syndrome



DATA AUDITED BY AN INDEPENDENT THIRD PARTY



## 2002 RESULTS FOR PGD (Preimplantation Genetic Diagnosis). Hereditary disorders linked to gender

	age $\leq$ 37	age $>$ 37	Total
No. of cycles	51	13	64
% abnormal embryos	25,6	31,5	26,6
No. of pregnancies	12	2	14
% pregnancies	28,6	16,7	25,9
% implantation	19,6	11,5	16,7

E.g. Haemophilia



DATA AUDITED BY AN INDEPENDENT THIRD PARTY





## 2002 RESULTS FOR PGD (Preimplantation Genetic Diagnosis). Translocation carriers

	Robertsonian	Reciprocal
No. of cycles	31	19
% abnormal embryos	70,4	80,0
No. of pregnancies	7	5
% pregnancies	28,0	33,3
% implantation	23,5	30,7





## 2002 RESULTS FOR PGD (Preimplantation Genetic Diagnosis).

### CF, spinal Muscular Atrophy, haemophilia

No. of cycles	5
No. of pregnancies	3
% pregnancies	60,0
% implantation	40,0





[www.ivi.es](http://www.ivi.es)